

HYBRID FLEXIBLE DEPTH DOOR SYSTEM

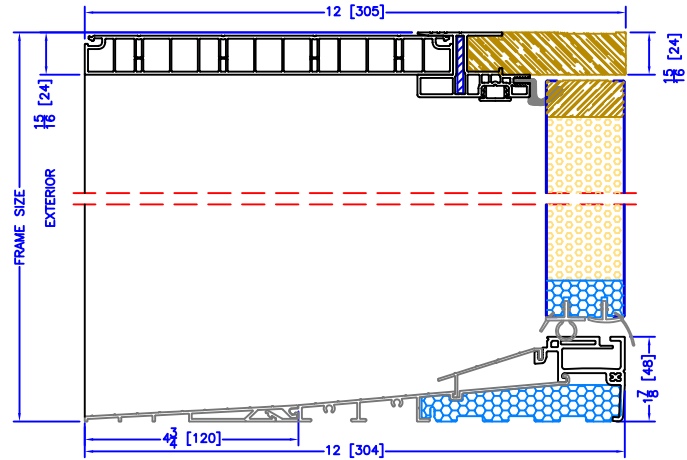


Standard Features

- Supports ICF and other deeper wall depths construction methods up to 10^{5/8}"
- Wood Frame offers rigidity and easy installation finished with an aesthetic screw cover.
- Dual and Triple Glazed Options
- Single and Double Door Configurations
- Decorative Glass, Textured and Privacy Glass Options
- Interior and exterior painting in all standard and custom colours
- 10 Year Warranty

Notes

- Frame depth ranges from 5^{5/8}" to 10^{5/8}"
- Inswing only.
- Available with plain frame and standard brickmould options only (No extended or Reno)
- Available with posts only (No mullions)
- Available with a Bronze Anodized or Mill Finished high performance sill
- Not available with mulled transoms
- Not available with storm door prep



CUSTOM FRAME DEPTHS UP TO 10^{5/8}"

AN IDEAL DOOR JAMB FOR ANY ENTRANCE

Crafted with versatility in mind, our new Flex Door Jamb is available as Inswing only, and is designed for wall depths greater than 5^{5/8}" – with custom sizing available up to 10^{5/8}". The close-out strip provides easy installation and the jamb build out only has one seam to maximize strength.

This flexible depth hybrid frame has a PVC exterior for ease of maintenance with a wood interior to provide rigidity and for ease of installation. The system is paintable inside and out to ensure you are able to create the entrance system you've envisioned.

AVAILABLE WITH STEEL & FIBERGLASS DOOR SLABS

RATINGS		HYBRID FLEXIBLE DEPTH DOOR SYSTEM					
		AIR	WATER	DESIGN PRESSURE		OVERALL PG psf	CLASS
DOOR SLAB MATERIAL	GLASS INSER (22 X 64)	RATING	RATING Pa (psf)	NEGATIVE Pa (psf)	POSITIVE Pa (psf)	OVERALL PG psf	CLASS
STEEL	No	A3	540 (11.25)	2400 (50)	2400 (50)	50	LC-PG2400
	Yes	A3	730 (15)	1680 (35)	1680 (35)	35	LC-PG1680
FIBERGLASS	No	A2	290 (6)	1920 (40)	1680 (35)	40	LC-PG1920
	Yes	A2	290 (6)	1920 (40)	2400 (50)	40	LC-PG1920

September 2023



www.kohltech.com