



 **Kohltech**  
Windows & Entrance Systems

**COMMERCIAL CAPABILITIES**

# DESIGNED TO DELIVER

When it's your project and your reputation, you want to be sure every component you choose will deliver.

At Kohltech, our mission is to ensure that every window and door we produce is outstanding – professionally engineered, crafted with excellence and designed for long-term, flawless performance. And it's a mission that we've been fulfilling since 1982.

Our commercial project team has years of expertise in helping building and construction professionals ensure the best project results. From design assistance and technical support at the planning stage through installation and beyond, our team is part of your team.

We're proud to be one of Canada's largest window manufacturer, and we're proud to see Kohltech windows and doors in schools, retail developments, office buildings, residential complexes and other commercial projects across Canada. From historical restorations to ultra-modern construction, the mark of excellence and energy efficiency is Kohltech. Every Kohltech commercial window and door is custom-crafted to your specifications, and you have our word that the end results will be nothing less than outstanding.





## PROJECT PROFILE

# MARRIOTT COURTYARD

HALIFAX, NOVA SCOTIA



The Marriott Courtyard in downtown Halifax, Nova Scotia includes a 125-room Courtyard by Marriott hotel, 38 apartments and two retail areas totaling 6,500 square feet.

The hotel's close proximity to, and orientation toward, the harbour required windows and doors that would look beautiful and perform beautifully against the elements. The commercial team at Kohltech provided 300 top-of-the-line Supreme windows, whose elegant styling was a perfect fit for the Courtyard brand's modern design scheme.

Each window was a plain frame design with a  $\frac{3}{4}$ " return, and came complete with LoE Argon glazing to ensure maximum energy efficiency. All multiple units were reinforced with engineered steel, and specific details such as galvanized installation brackets were applied to the mullions of the custom bay windows. Marriott also ordered Select patio doors for their excellent performance, durability and value, and Tilt and Turn windows for their functionality and European flair.

At Kohltech, we take pride in being able to customize any product to a customer's needs. In addition to the specially reinforced windows, we delivered again by custom painting the window and patio door sash components Marriott's corporate colour, Hadley Red. It's just one more way we helped ensure truly outstanding results.

### PRODUCTS

Casement fixed windows

Casement bay windows

Select patio doors

Tilt and Turn windows

### UNIQUE SOLUTIONS

Painted custom sash on tan extruded frames

Custom reinforcement for installation in precast panels

LoE Argon for maximum energy efficiency

# Commercial Projects Overview



## DARTMOUTH CROSSING Dartmouth, Nova Scotia

### Products

- Select fixed over Casement

### Unique Solutions Provided

- Cost effective vs. aluminum
- Quick turn around time
- Ease of maintenance



## SHANNEX RIVERVIEW Riverview, New Brunswick

### Products

- Supreme Single hung

### Unique Solutions Provided

- Energy efficiency
- Ease of maintenance
- Restricted opening on hung windows
- Custom second floor interface



## VIMICA RIDGE MEDICAL CENTRE Lower Sackville, Nova Scotia

### Products

- Tan Supreme picture windows with solar cooled bronze glass

### Unique Solutions Provided

- Fiberglass entrance system
- Reduced cost vs aluminum
- Energy efficiency
- Ease of maintenance
- Aesthetics



## PORTLAND HILLS CONDOMINIUMS Halifax, Nova Scotia

### Products

- Casement, awnings and picture windows
- Patio doors
- Picture window over gliders

### Unique Solutions Provided

- Energy efficient
- Ease of maintenance
- Aesthetics



## THE PALACE ROYALE Halifax, Nova Scotia

### Products

- Tilt and Turn doors
- Tilt and Turn awnings

### Unique Solutions Provided

- Custom Tilt and Turn patio balcony units
- Rain screen installation
- Drop glazed fixed windows



## REXTON LIONS MEDICAL CENTRE AND NURSING HOME Rexton, New Brunswick

### Products

- Select awnings
- Select fixed

### Unique Solutions Provided

- Contributed to LEED certification
- Achieved architectural aesthetics with 2" SDL
- Daylight requirements
- Solera® Glass



## THE NORTHUMBERLAND Charlottetown, Prince Edward Island

### Products

- Tilt and Turn
- Casement

### Unique Solutions Provided

- Fully engineered for site requirements
- Energy efficiency
- Ease of maintenance
- Aesthetics



## WICKWIRE SENIORS COMPLEX Wolfville, Nova Scotia

### Products

- Supreme casement with Solar Ban 60 glass

### Unique Solutions Provided

- Energy efficiency
- Fixed over operators
- Ease of maintenance
- Aesthetics





**HARBOUR ILSES**  
Dartmouth, Nova Scotia

Products

- Select awning/fixed
- Select patio doors

Unique Solutions Provided

- Installation review and training
- Logistical support
- Structurally reinforced to 12 stories of exposure



**GARDEN STONE PLACE**  
Halifax, Nova Scotia

Products

- Belmont patio doors
- Supreme casement/awnings

Unique Solutions Provided

- Painted KC black (the 3rd floor products were painted on both the interior and exterior)
- Installed with brackets in a precast concrete construction application



**FALKLAND CONDOS**  
Halifax, Nova Scotia

Products

- Select single hung
- Select patio door

Unique Solutions Provided

- Cost effective vs aluminum
- Energy efficiency



**SKYVIEW TERRACE AT MOUNT ROYAL**  
Halifax, Nova Scotia

Products

- Supreme casement
- Select patio door with LoE/Argon

Unique Solutions Provided

- Restricted openings



**BEST WESTERN CHOCOLATE LAKE HOTEL**  
Halifax, Nova Scotia

Products

- Supreme awnings and fixed

Unique Solutions Provided

- Cost effective vs aluminum
- Ease of maintenance
- Retrofit



**CROWN ON REGENCY**  
Halifax, Nova Scotia

Products

- Select single hung
- Select patio door with LoE/Argon

Unique Solutions Provided

- Restricted openings



**NOTTING VILLAGE**  
Dartmouth, Nova Scotia

Products

- Select single hung Oriels with Solarban 60 glass

Unique Solutions Provided

- Cost effective vs aluminum
- Tan profile
- Aesthetics



**5800 SOUTH**  
Halifax, Nova Scotia

Products

- Supreme glider/picture combo
- Select patio door with LoE/Argon

Unique Solutions Provided

- Tan foil outside, white foil inside (split finish)



**THE ABIGAIL**  
Halifax, Nova Scotia

Products

- Select awning/fixing
- Select patio doors

Unique Solutions Provided

- Cost effective
- Quick delivery
- Customize install details



**LUXOR**  
Halifax, Nova Scotia

Products

- Tribute fixed/awning

Unique Solutions Provided

- Black exterior
- Custom locking handles
- High performance reinforcement



**BEDFORD HIGH SCHOOL**  
Bedford, Nova Scotia

Products

- Supreme single hung

Unique Solutions Provided

- Painted exterior
- Custom transom glass
- Restricted sashes
- Heavy duty hardware
- Heavy duty structural Reinforcement



**COLDBROOK ELEMENTARY SCHOOL**  
Coldbrook, Nova Scotia

Products

- Supreme single hung

Unique Solutions Provided

- Custom colored paint
- Aluminum screen cloth
- Restricted sashes



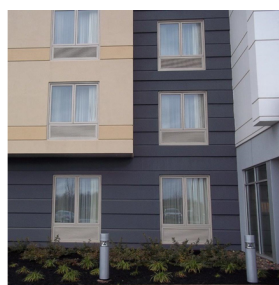
**COLCHESTER REGIONAL HOSPITAL**  
Truro, Nova Scotia

Products

- Tilt and Turn fixed
- Casement

Unique Solutions Provided

- Spallshield glass
- Coordinated site logistics



**FAIRFIELD MARRIOTT**  
Rexton, New Brunswick

Products

- Supreme casement

Unique Solutions Provided

- Integrated PTAC louvers
- Tan extrusion
- Sash restrictions



**HOLIDAY INN GW BRIDGE**  
Fort Lee, New Jersey

Products

- Tilt and Turn picture

Unique Solutions Provided

- Energy efficiency
- Sound abatement
- Site glazing
- Drop logistics



**WILLOW STREET SCHOOL**  
Truro, Nova Scotia

Products

- Select single hung

Unique Solutions Provided

- Tan extrusion
- Custom configuration

# Hung and Slider Windows



Kohltech hung and slider windows featuring aesthetically pleasing beveled frames, offer superior product performance and extensive design flexibility. The 3 1/4" single/double hung welded design and interlock with triple weather-stripping seals, offer excellent resistance to air infiltration and energy loss. Our windows are available with nailing fin and several brickmold options for new construction, or 3 1/4" frames for replacement applications.

- AVAILABLE CONFIGURATIONS:**
- Single and double-hung
  - Slider
  - Picture (fixed) window



# Casement Windows



Our commercial rated 3 1/4" casement/awning window's welded design incorporates high-performance window technology and elegant millworking detail. Each window features a unique contoured sash and glazing stop. Matching large and small picture frame options and a wide variety of glass choices are available, allowing maximum design flexibility.

- AVAILABLE CONFIGURATIONS:**
- Casement and awning
  - Picture (fixed)



# Tilt and Turn Windows and Doors

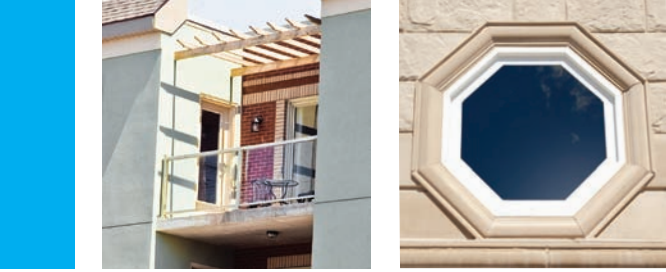


Kohltech Tilt and Turn windows deliver performance, dual functionality and security, with a modern European flair. Each window conveniently tilts or turns for maximum ventilation and comes standard with multi-point locking hardware for high-security. Numerous glass and insulated panel options provide even more versatility to customize to your specifications.

- AVAILABLE CONFIGURATIONS:**
- Tilt and Turn window
  - Hopper
  - Awning
  - Atrium door and French door
  - Picture (fixed)







For more information, email our Commercial Solutions Team at [commercialsolutions@kohltech.com](mailto:commercialsolutions@kohltech.com) or call 1 800 565-4396.

# **Kohltech** Windows & Entrance Systems

[www.Kohltech.com](http://www.Kohltech.com)

583 MacElmon Road, PO Box 131, Debert  
Nova Scotia, Canada B0M 1G0

Tel: (902) 662-3100 Toll Free: 1-800-565-4396

15311 128 Ave NW, Edmonton  
Alberta, Canada T5V 1A5

Tel: (780) 481-2575 Toll Free: 1-800-379-5818

